
**Visibility
Accountability
Orchestration
Automation**



mktg@ptechnosoft.com



www.ptechnosoft.com

AN INTELLIGENT IT SERVICE AVAILABILITY MANAGEMENT SUITE

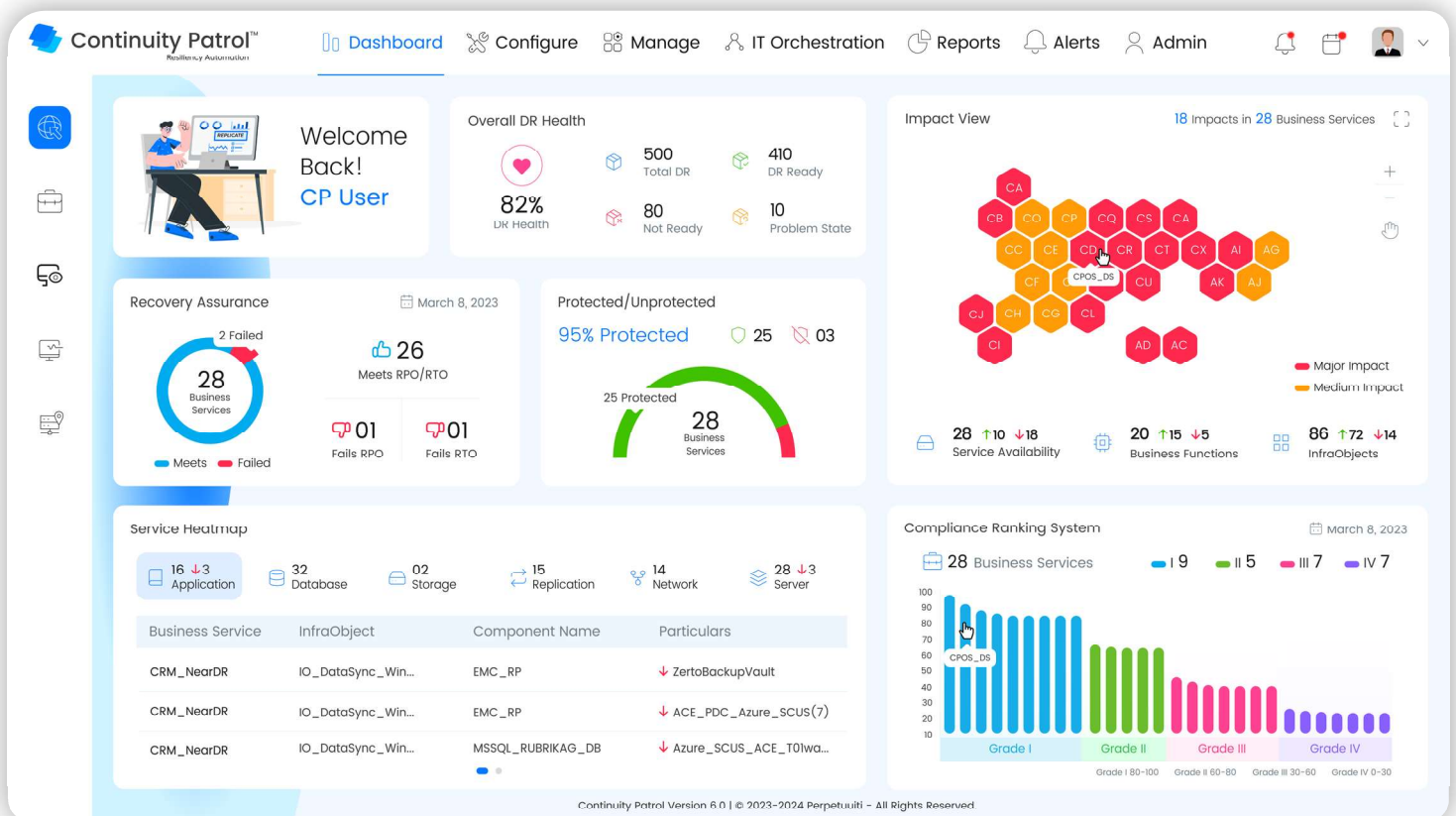
Business Service Availability

Continuity Patrol can help CXOs make well informed business decisions by enabling Real-Time Visibility into financial impact of a critical business service due to an unplanned outage or degradation of service.

Continuity Patrol enables Business Services and IT Relationship mapping in real-time, and the cascading impact of any IT disruption on dependent business services.

BIA & Real-Time FIA

The product uniquely enables "Live Business Impact Analysis" functionality that leverages the dependency definitions and cost data to calculate quantitative financial impacts using "What-If Analysis" that can be specific to a single production application, a set of production applications or the entire DataCenter.



Virtualization Automation

- » Integration with Hypervisor layer
- » Automates various operations such as
- » Power ON, OFF, thick and thin provisioning
- » Consistency Checks
- » Custom actions for virtual guest OS



Network Automation

- » SNMP based monitoring for network components
- » Network device availability and health statistics
- » Monitoring and automatic updates for the firewall policies
- » Device firmware monitoring



Application Aware Layer

- » This feature helps recover the inter-dependent IT components of an application during an IT disruption at the site level/datacenter level.
- » Gives complete and real-time view of inbound & out-bound inter-dependencies among different applications which are known to the "Application Aware Layer", for Continuity Patrol to take prompt decisions during IT recovery.

Auto Discovery of Application Infrastructure and Inter-Dependency Mapping

- » Continuity Patrol with its agent-less and script-less approach does the auto discovery of the entire Application Infrastructure environment with all its inter-dependent IT components involved within the Production network.
- » It also updates CMDB with the relevant information related to the discovered components including Server, Storage and Network devices and represents the same diagrammatically as an architectural view.
- » This helps in depicting the cascading impact of disruption and affected applications.

IT Infrastructure View

Continuity Patrol | Dashboard | Configure | Manage | IT Orchestration | Reports | Alerts | Admin

IT Infrastructure View

Business Function

InfraObject 1

InfraObject 2

InfraComponent 3

525 Total

Search

- Infracomponent 1
- Infracomponent 2
- Infracomponent 3
- Infracomponent 4

+125 InfraObjects

Continuity Patrol Version 6.0 | © 2023-2024 Perpetuuti - All Rights Reserved.

Application Dependency Mapping

Continuity Patrol | Dashboard | Configure | Manage | IT Orchestration | Reports | Alerts | Admin

Application Dependency Mapping

172.16.128.137

172.16.128.11

172.16.128.140

172.16.128.175

172.16.128.139

172.16.128.138

Continuity Patrol Version 6.0 | © 2023-2024 Perpetuuti - All Rights Reserved.

Reports

Following are some of out-of-the-box and customizable reporting templates integrated in Continuity Patrol

- » Reports for RPO/RTO, MAO, Data lag
- » Switchover/Switchback and Failover/Failback
- » Consistency Group (CG) formation report for storage based replication
- » Application Summary

The screenshot shows the Continuity Patrol web interface. The top navigation bar includes: Dashboard, Configure, Manage, IT Orchestration, Reports (active), Alerts, Admin, and user profile. The main content area is titled 'Prebuild report' and features a sidebar with report thumbnails: Business Service Summary Report, RPO SLA Report (selected), InfraObject Config Report, InfraObject Summary Report, User Activity Report, and another InfraObject Config Report.

The 'RPO SLA Report' is displayed in a table format. The report type is 'RPO SLA Report' for 'Infra Object Name' 'Select Infra Object Name', with 'Start Date' 21/03/2022 and 'End Date' 21/06/2022. A 'View Report' button is present.

Sr. No	Production Archive Log Sequence	Archive Log Applied at DR	Data Lag	TimeStamp
1	1026 Thread (#1)	1022 Thread (#1)	2:22:20:24	20-02-2023 11:30:36
2	1026 Thread (#1)	1022 Thread (#1)	2:22:35:19	20-02-2023 11:30:36
3	1026 Thread (#1)	1022 Thread (#1)	2:22:50:15	20-02-2023 11:30:36
4	1026 Thread (#1)	1022 Thread (#1)	NA	20-02-2023 11:30:36
5	1026 Thread (#1)	1022 Thread (#1)	2:23:35:11	20-02-2023 11:30:36
6	1026 Thread (#1)	1022 Thread (#1)	2:23:50:13	20-02-2023 11:30:36
7	1026 Thread (#1)	1022 Thread (#1)	3:00:05:13	20-02-2023 11:30:36
8	1026 Thread (#1)	1022 Thread (#1)	3:00:20:16	20-02-2023 11:30:36
9	1026 Thread (#1)	1022 Thread (#1)	3:00:35:14	20-02-2023 11:30:36
10	1026 Thread (#1)	1022 Thread (#1)	00:00:00:00	20-02-2023 11:30:36
11	1026 Thread (#1)	1022 Thread (#1)	00:00:00:00	20-02-2023 11:30:36
12	1026 Thread (#1)	1022 Thread (#1)	2:23:50:13	20-02-2023 11:30:36
13	1026 Thread (#1)	1022 Thread (#1)	3:00:05:13	20-02-2023 11:30:36
14	1026 Thread (#1)	1022 Thread (#1)	3:00:20:16	20-02-2023 11:30:36
15	1026 Thread (#1)	1022 Thread (#1)	3:00:35:14	20-02-2023 11:30:36
16	1026 Thread (#1)	1022 Thread (#1)	00:00:00:00	20-02-2023 11:30:36
17	1026 Thread (#1)	1022 Thread (#1)	00:00:00:00	20-02-2023 11:30:36
18	1026 Thread (#1)	1022 Thread (#1)	3:00:20:16	20-02-2023 11:30:36
19	1026 Thread (#1)	1022 Thread (#1)	3:00:35:14	20-02-2023 11:30:36
20	1026 Thread (#1)	1022 Thread (#1)	00:00:00:00	20-02-2023 11:30:36
21	1026 Thread (#1)	1022 Thread (#1)	00:00:00:00	20-02-2023 11:30:36
22	1026 Thread (#1)	1022 Thread (#1)	03:00:35:14	20-02-2023 11:30:36
23	1026 Thread (#1)	1022 Thread (#1)	00:00:00:00	20-02-2023 11:30:36
24	1026 Thread (#1)	1022 Thread (#1)	00:00:00:00	20-02-2023 11:30:36

Report Generated by Dr. Doofenshmirtz Date & Time: 21/06/2022 08:21:23 PM

Deployment Pre-requisites

Web Server Hardware requirements

- » System with 2.4 GHz Dual / Quad core processors.
- » (Either Physical server or Virtual Machine)
- » 64 Gigabyte Ram (Minimum)
- » 500 GB Hard Drive (Either in Local Server or in SAN)

Operating System Requirement

- » Windows Server 2016 / 2019 Standard/Enterprise Edition or Latest
- » .Net Core Runtime 6 and above
- » Python 3.9 and Above

IIS

- » IIS Server 10.0 and above
- » Web Browser - Chrome / Edge

Port

- » Micro Service Port – 2000 Series (2000/2001)
- » Python Port – 5000 Series (5000/5001/5002)

Application Server Hardware Requirements

- » System with 2.4 GHz Dual / Quad core processors.
- » (Either Physical server or Virtual Machine) - (Minimum)
- » 64 Gigabyte Ram (Minimum)
- » 500 GB Hard Drive (Either in Local Server or in SAN)

Operating System Requirement

- » Windows Server 2016 / 2019 Standard/Enterprise Edition or Latest
- » .Net Core Runtime 6 and above

IIS

- » IIS Server 10.0 and above
- » Web Browser - Chrome / Edge

Port

- » UI Ports – 3000/3001)



Node Type

- » Single Node
- » Multiple Node

Port

- » Micro Service Port – 2000 Series (2000/2001)
- » Python Port – 5000 Series (5000/5001/5002)

DB Server Hardware requirements

- » System with 2.4 GHz Dual / Quad core processors
- » (Either Physical server or Virtual Machine)
- » 64 Gigabyte Ram (Minimum)
- » 500 GB Hard Drive (Either in Local Server or in SAN)

Operating System Requirement

- » Windows Server 2016 / 2019 Standard/Enterprise Edition or Latest
- » Linux Platform (Oracle or MySQL)

Metadata Supported

MSSQL Server Enterprise Edition (2016 & Above)

- » Windows and SQL Authentication
- » Port 1433

Oracle 12 C to 19C

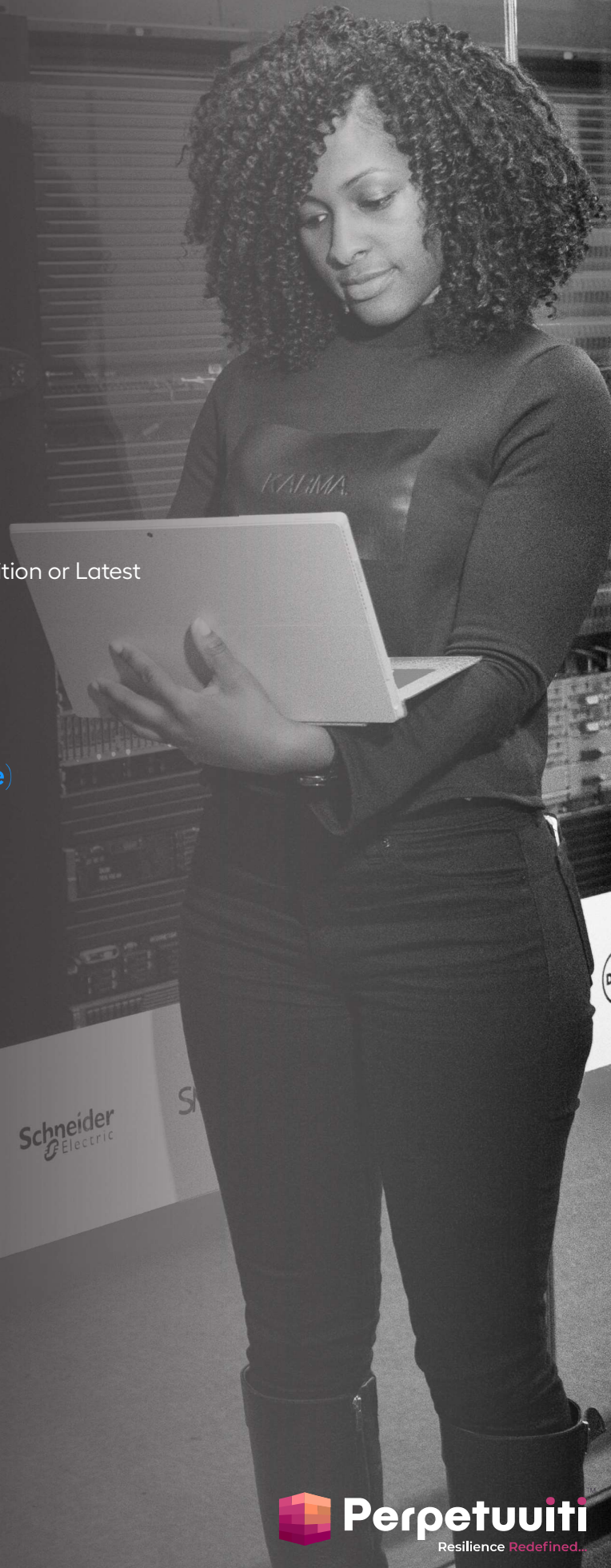
- » Port 1521
- » Sys DBA Role and Connect, Resource Privilege
- » Table Space with Unlimited Quota

MySQL (8.0.00 and above)

- » Port 3306

E-mail and SMS Pre-requisites

- » SMTP Configuration
- » SMS Gateway Configuration
- » E-mail ID Configuration
- » Notification Configuration





Product Highlights

- » Multi-tenanted software
- » Agent-less, Script-less product
- » RaaS (Pay as you go)
- » Support heterogeneous IT environment (physical, Virtual and cloud platforms)
- » Real-time CXO Dashboard for business services availability management, BIA and FIA
- » Auto-Discovery of application infrastructure and inter-Dependency Mapping
- » Recovery management and Automated recovery tests
- » Single-Click Recovery for switchover/ Switchback / Failover
- » Built-in API Libraries
- » Customizable Workflows
- » Network / DNS / Firewall Automation
- » ISO 22301 complaints and audit ready reports
- » Reduced TCO

Perpetuuti is an innovation leader focused on building products that address Business Service Availability Assurance, Orchestration and Automation challenges and ensures complete Business Resiliency for enterprises

Through its flagship product Continuity Patrol, Perpetuuti provides full automation and real-time visibility of health of the Recovery site and services.

Perpetuuti provides this comprehensive Availability Management solution at a competitive price regardless of the size of the organization. Continuity Patrol provides simple yet a powerful way to proactively manage and consistently meet your business recovery service levels as defined by the Recovery Point Objective (RPO) and Recovery Time Objective (RTO). Its graphical user interface (dashboard) enables fully automated monitoring, replication, migration and failover for business applications and the IT infrastructure supporting them.

Continuity Patrol provides single web based console to monitor service/application availability for heterogeneous IT environment and automate various recovery operations

Continuity Patrol has a built-in role based access control (RBAC) and supports LDAP, integration with AD and SAML based authentication.

Recovery Management Gaps

- » Most organizations do not test their Recovery solutions for
- » readiness on a consistent basis.
- » They lack the quantitative metrics to proactively manage alerts for system emergencies.

The weakest link in Recovery solutions is that workflow processes are manual and overly dependent on human intervention.

- » Service Availability consists of pre-defined processes, policies and procedures to prepare for recovery of IT infrastructure which is critical to the organization after a natural or human induced disaster. Nonetheless, for a number of well-known reasons, even those recovery efforts can fail to ensure business availability.



The result of these weaknesses alone is that the opportunity for prevention is either overlooked or recovery is unreliable with hits and misses that prolong the costly downtime.

The capital and operational costs associated with this optimal recovery posture are quite extensive and require additional time and expertise to implement. Consequently, due to the cost of this highly redundant recovery design, most small to medium businesses and even some large, global enterprises forego the investment or only make partial investments of people, tools and technology, choosing to leave themselves either partially protected or totally at risk to the eventual disaster.

Supported Environment >>

Operating Systems

- ◆ Windows
- ◆ HP-UX
- ◆ Solaris
- ◆ RedHat Linux
- ◆ SUSE Linux
- ◆ IBM AIX
- ◆ Mainframes

Replication

- ◆ EMC-Time Finder, SRDF
- ◆ Mirror View, SnapView
- ◆ Network Appliance Snap Mirror, Snap Shots, Snap Vault
- ◆ Hitachi data Systems True Copy, Shadow Image, Universal
- ◆ Replicator, True Shadow
- ◆ Oracle-DataGuard
- ◆ IBM - Global Mirror
- ◆ HP Remote Copy

Cluster

- ◆ Veritas Cluster Server
- ◆ HP MC/Service Guard
- ◆ IBM HA/CMP
- ◆ Sun Cluster
- ◆ Microsoft Cluster Server
- ◆ Red Hat Cluster

Databases

- ◆ Oracle
- ◆ MSSQL
- ◆ MySQL
- ◆ Sybase
- ◆ DB2
- ◆ Sybase
- ◆ PostgreSQL
- ◆ SAP HANA
- ◆ Mongo

Storage

- ◆ EMC
- ◆ Hitachi data Systems
- ◆ HP
- ◆ Network Appliance
- ◆ IBM

Virtual Platforms

- ◆ Vmware
- ◆ Microsoft Hyper-V
- ◆ Xen

Cloud

- ◆ AWS
- ◆ Microsoft Azure
- ◆ CGP
- ◆ OCI

HCI Platforms

- ◆ Nutanix
- ◆ Cisco
- ◆ HPe
- ◆ SimpliVity





About Continuity Patrol

IT Service Availability Management solutions have evolved a long way since 2000s but not far enough; especially in multi-site and multi-mode, On premise/Hybrid/Cloud configuration situations... that is until Perpetuuti developed Continuity Patrol.

Continuity Patrol is an IT recovery framework, designed to support multiple applications, replications and DB technologies; integrated to provide comprehensive Automated IT Recovery solution. Continuity Patrol solution supports all platforms & integrates with various databases and applications to automate the critical task of Business & IT Service Continuity.

Continuity Patrol is an acclaimed recovery innovation that helps an enterprise implement recovery in the traditional sense as well as on the Cloud by automating the maintenance, monitoring, management, replication, failover and failback via defined automated workflows either using a traditional enterprise licensing model or as a multi-tenant Recovery-as-a-Service (Raas) solution.

Continuity Patrol has a unique Command Center dashboard that shows IT Services Mapping View, Summary of key parameters for stand-alone & recovery protected IT services like Service Health, RPO, RTO, Replication Status, Alerts, Impact, and Priority, and thus provides an IT Service Availability summary of configured business services. It helps nailing down the exact IT failure for the IT personnel to take corrective actions on time.

Continuity Patrol is built on a framework that provides built-in support for multiple replication and database (DB) technologies including mechanisms to integrate with newer technologies through APIs. Continuity Patrol has its own File Replication Utility named “DataSync”, which delivers a reliable, highly efficient and cost effective solution to the file sharing and availability needs to enterprises of all sizes.

Continuity Patrol offers version based workflow library, based on industry good practices that encompasses recovery actions for all the components of applications such as Server, Storage, OS, Replication technology, etc. As a comprehensive solution, it enables an enterprise to deploy a completely automated recovery solution for web services, applications, databases, operating systems, storage and virtual instances. Continuity Patrol offers various APIs required for integration with the relevant technologies and automating recovery actions, therefore, reducing the dependency on scripts and time for deployment.

Continuity Patrol has the capability to define Recovery Load Balancers (RLBs) using “Split Brain” technology which allows to trigger recovery workflows for various applications concurrently and simultaneously. Hence, allows to adhere to defined RTO at the time of site failover/switchover. Parallel Processing and recovery load balancer capabilities allow committing stringent RTOs to the business.

Continuity Patrol user interface is also supported over mobile devices that support iOS, Android and Windows.

Benefits of Continuity Patrol

- » Mitigates and drastically reduces recovery operational risks at a favourable price point
- » HA capability for the management server
- » Centralized Command Center dashboard that provides real-time visibility & holistic view of a complex heterogeneous IT environment
- » Provides BIA capability that helps taking an informed decision based on the losses business will incur due to application/service unavailability
- » Agentless Monitoring of infrastructure health & custom application services
- » Provides application analytics to define inbound/outbound dependencies
- » Supports cross-platform DB replication and optimizes replication for Recovery and Production sites
- » Alerts on deviations in health parameters such as disk space, password changes, file addition/deletion for prompt corrective actions
- » Exception Manager for initiating remedial action in response to alerts
- » Central Console for recovery management activities such as non-intrusive recovery drills for pre-flight checks, Switchover, Switchback, Failover & Fail back, application start/stop activities, etc.
- » Monitoring of firewall policies and automated updates
- » Application centric Recovery Management with end-to-end automation capabilities
- » Helps reduce the bandwidth and storage requirements
- » Dynamic & UI based multi format Reports exportable to popular reporting engines (based on ISO 22301 Standards)
- » Remote Management & Role based User Access Control
- » Provides SMNP traps for the integration with industry standard Helpdesk / Enterprise Management Solutions
- » Integration with Business Continuity Management Solutions

About Perpetuuti

Global Enterprise Software Company focused on building products that address IT Service Continuity and Availability Assurance, Orchestration and Automation challenges

An INTEL Capital PORTFOLIO COMPANY, Perpetuuti is a global enterprise software company focused on building Software products that address IT Service Continuity and Availability Assurance, Orchestration and Automation challenges for On-Premises or Cloud Deployments.